

WT1800 Power Analyzer Custom Display Tutorial

WT1800 Custom Display

- The WT1800 allows you the ability to create your own custom display
- To load your custom display onto the WT1800 you must:
 1. Load Display Configuration (.txt) file that contains the functions to be displayed
 2. Load Background (.bmp) file that contains the custom background image
- Background image files must meet the following requirements
 - File Format: BMP
 - Resolution: 800 x 672 pixels
 - Color Scale: 16-bit High color (R: 5 bits, G: 6 bits, B: 5 bits)
24-bit True color (R: 8 bits, G: 8 bits, B: 8 bits)
 - Size: Approx. 1MB for 16-bit
Approx. 1.6MB for 24-bit
- When loading Display Configuration and Background, please make sure the files are located in the same folder

Setting the Custom Display



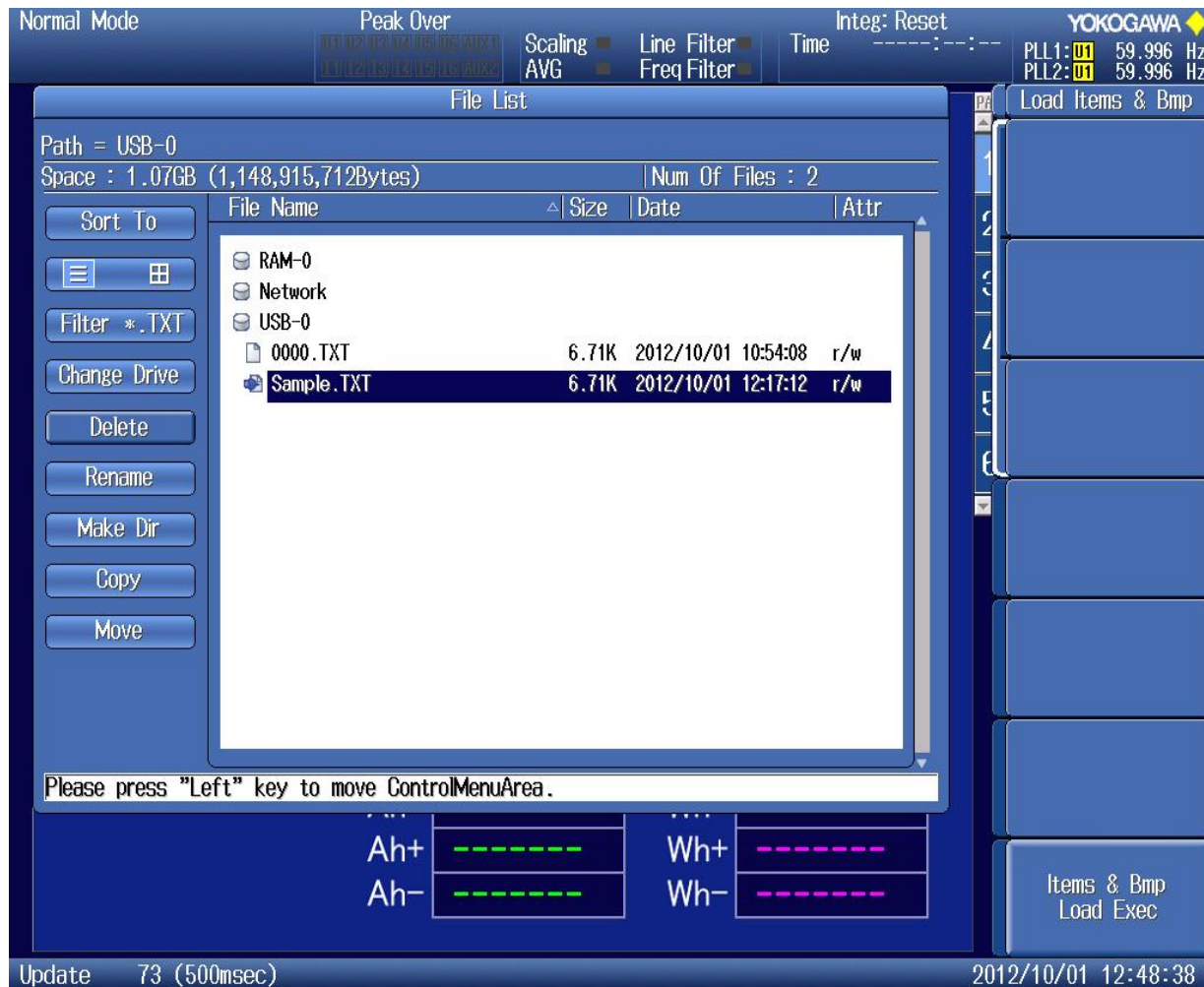
1. Press [NUMERIC] button
2. Press [FORM] button
3. Select Custom Soft Key

Loading the Custom Display



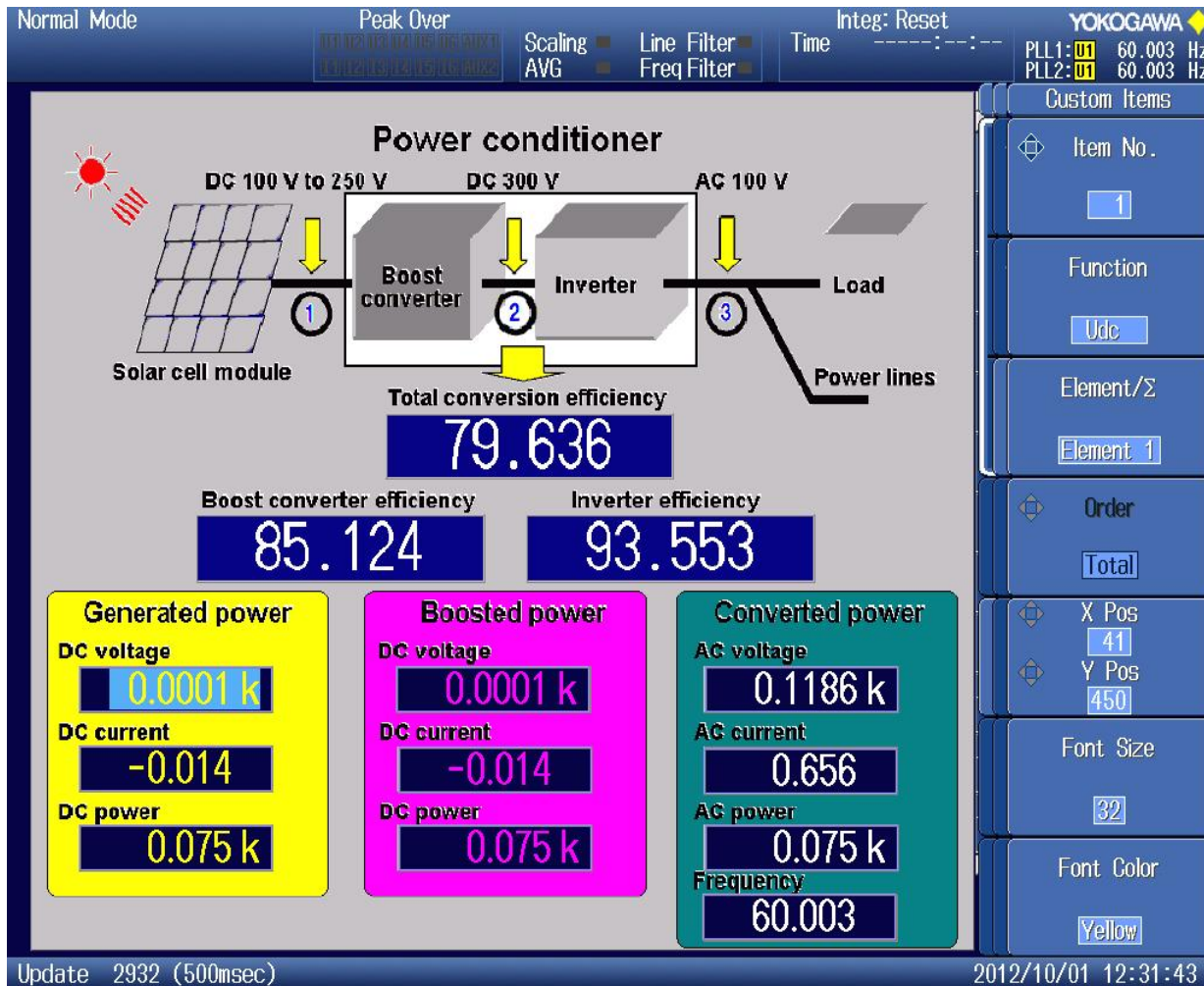
1. Press [ITEM] button
2. To load Display Configuration: Select Load Items Soft Key
3. To load Background image file: Select Load Bmp
4. To Display Configuration and Background files: Select Load Items & BMP Soft Key

Loading the Sample Display



1. Press [ITEM] button
2. Press Load Items & Bmp Soft Key
3. Highlight and Select Sample.TXT
4. Press Items & Bmp Load Exec Soft Key

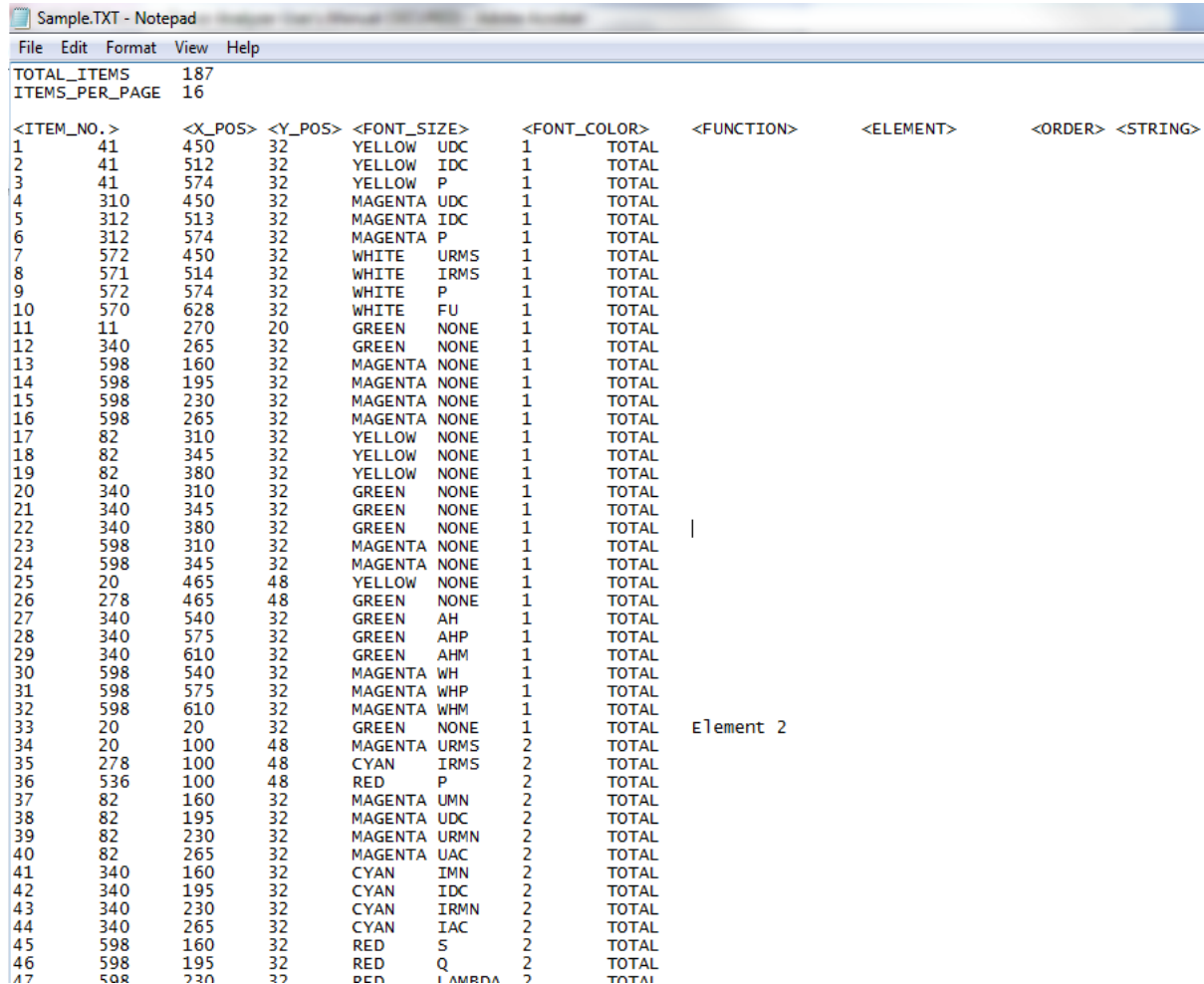
Customizing Display Items



1. Press Edit Items Soft Key
2. Press Custom Items Soft Key
3. Press Item No. Soft Key to select item number
4. Press Function Soft Key to select measurement function
5. Press Element to set the input element
6. Push X Pos or Y Pos to change the display position
7. Push Font Size to set the font size
8. Push Font Color to set the font color

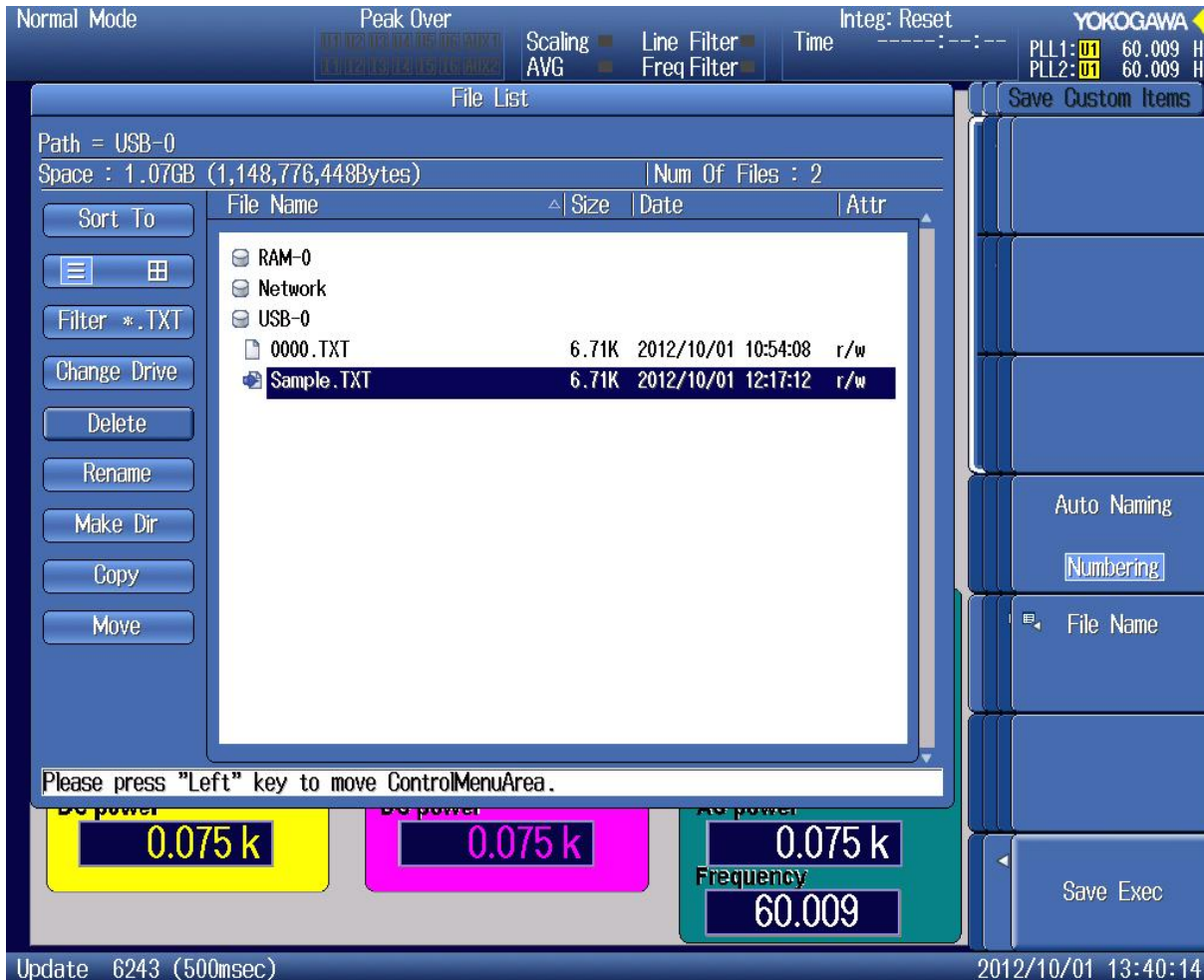
Customizing Display Items

You may also edit the text file to quickly set the position of each measurement function



<ITEM_NO.>	<X_POS>	<Y_POS>	<FONT_SIZE>	<FONT_COLOR>	<FUNCTION>	<ELEMENT>	<ORDER>	<STRING>
1	41	450	32	YELLOW	UDC	1	TOTAL	
2	41	512	32	YELLOW	IDC	1	TOTAL	
3	41	574	32	YELLOW	P	1	TOTAL	
4	310	450	32	MAGENTA	UDC	1	TOTAL	
5	312	513	32	MAGENTA	IDC	1	TOTAL	
6	312	574	32	MAGENTA	P	1	TOTAL	
7	572	450	32	WHITE	URMS	1	TOTAL	
8	571	514	32	WHITE	IRMS	1	TOTAL	
9	572	574	32	WHITE	P	1	TOTAL	
10	570	628	32	WHITE	FU	1	TOTAL	
11	11	270	20	GREEN	NONE	1	TOTAL	
12	340	265	32	GREEN	NONE	1	TOTAL	
13	598	160	32	MAGENTA	NONE	1	TOTAL	
14	598	195	32	MAGENTA	NONE	1	TOTAL	
15	598	230	32	MAGENTA	NONE	1	TOTAL	
16	598	265	32	MAGENTA	NONE	1	TOTAL	
17	82	310	32	YELLOW	NONE	1	TOTAL	
18	82	345	32	YELLOW	NONE	1	TOTAL	
19	82	380	32	YELLOW	NONE	1	TOTAL	
20	340	310	32	GREEN	NONE	1	TOTAL	
21	340	345	32	GREEN	NONE	1	TOTAL	
22	340	380	32	GREEN	NONE	1	TOTAL	
23	598	310	32	MAGENTA	NONE	1	TOTAL	
24	598	345	32	MAGENTA	NONE	1	TOTAL	
25	20	465	48	YELLOW	NONE	1	TOTAL	
26	278	465	48	GREEN	NONE	1	TOTAL	
27	340	540	32	GREEN	AH	1	TOTAL	
28	340	575	32	GREEN	AHP	1	TOTAL	
29	340	610	32	GREEN	AHM	1	TOTAL	
30	598	540	32	MAGENTA	WH	1	TOTAL	
31	598	575	32	MAGENTA	WHP	1	TOTAL	
32	598	610	32	MAGENTA	WHM	1	TOTAL	
33	20	20	32	GREEN	NONE	1	TOTAL	Element 2
34	20	100	48	MAGENTA	URMS	2	TOTAL	
35	278	100	48	CYAN	IRMS	2	TOTAL	
36	536	100	48	RED	P	2	TOTAL	
37	82	160	32	MAGENTA	UMN	2	TOTAL	
38	82	195	32	MAGENTA	UDC	2	TOTAL	
39	82	230	32	MAGENTA	URMN	2	TOTAL	
40	82	265	32	MAGENTA	UAC	2	TOTAL	
41	340	160	32	CYAN	IMN	2	TOTAL	
42	340	195	32	CYAN	IDC	2	TOTAL	
43	340	230	32	CYAN	IRMN	2	TOTAL	
44	340	265	32	CYAN	IAC	2	TOTAL	
45	598	160	32	RED	S	2	TOTAL	
46	598	195	32	RED	Q	2	TOTAL	
47	598	230	32	RED	UAC	2	TOTAL	

Saving the Custom Display



1. Press [ITEM] button
 2. Press Edit Items Soft Key
 3. Press Save Custom Items Soft Key
 4. Press File List Soft Key to select Save Destination
 5. Press Save Exec
- Saved file will be a .TXT file containing the display configuration