

YOKOGAWA 

DLM4000 SERIES

Mixed Signal Oscilloscope

Mixed Signal Oscilloscope DLM4000

When 4 channels are not enough ...

DLM4000

For more information, go to

tmi.yokogawa.com

Test & Measurement Instruments



 3-Year Warranty 

Bulletin DLM4000-00EN

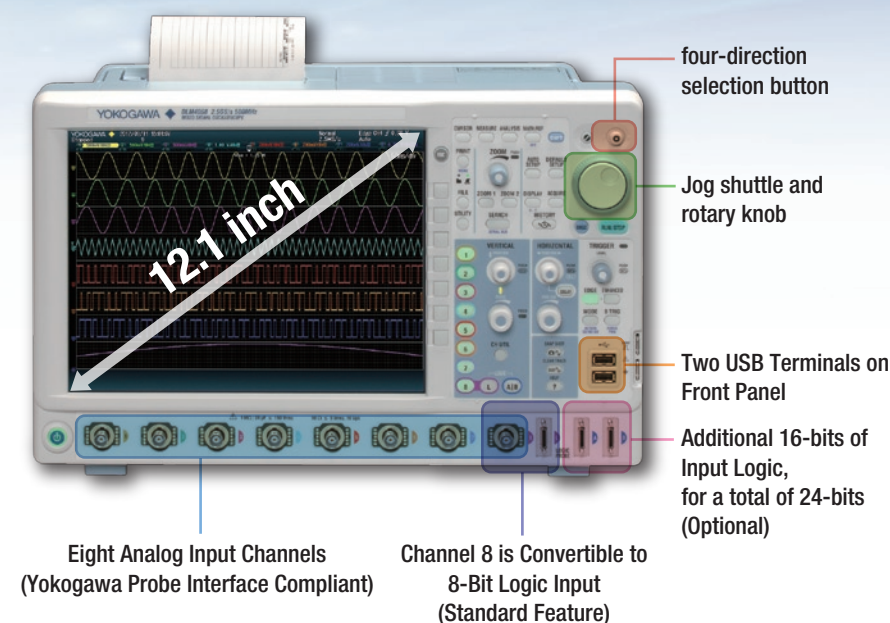
For today's challenging power electronics, automotive electronics and mechatronics: Only one scope will do – the world's only eight-channel oscilloscope - the DLM4000.

This combination with the optional PBDH0150 High-Voltage Differential Probe, creates a compact and multi-channel floating voltage and current measuring system.

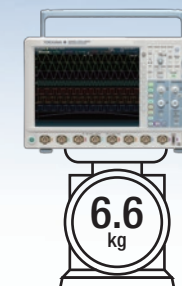


The portable eight-channel DLM4000 is the daily instrument of choice.

12.1" LCD enables eight waveforms to be easily observed.



Portable



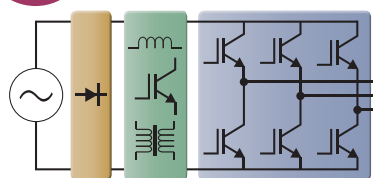
178mm 355mm



**Modest 178 mm Depth
Half of the former model DL7480**

Typical Demanding Applications for the Eight-Channel DLM4000

8ch Motor Control & Inverter Circuit Development



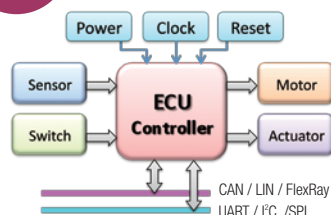
Example: 3 voltage & 3 current measurements of a 3-phase motor
Measurement of the gate-drive signals of six IGBTs within the inverter

Key to efficient and reliable high-performance electric motors is the modern inverter design, or 'Intelligent Power Module'. Multi-channel, high-speed waveform measurement is an absolute necessity. Four channels are simply not enough. Boasting eight true analog inputs, the DLM4000 empowers today's engineer with a convenient and comprehensive measurement system.

4ch Limitation of 4ch Scope

Whole-system measurement is impossible with a four-channel scope; the real difficulty is measuring the timing between IGBT gate signals within the inverter. Voltage and current measurements between 3 phases and the IO of the motor driver IC is a very challenging test with a four-channel scope. The truly practical solution is an eight-channel MSO.

8ch Electronic Control Unit & Mechatronic Test



Example: Analog I/O and serial bus controller signals
Stringent realtime test of digital waveforms in the analog domain.

Numerous I/O analog, digital, and serial-bus waveforms surrounding the Electronic Control Unit (ECU) must be measured. The DLM4000 offers ample channel-count and architecture to monitor eight analog channels and up to 24-bits of logic input while simultaneously performing protocol analysis such as UART, I2C, SPI, CAN, LIN and FlexRay. The DLM4000 can speed up the R&D process. Four channels are not enough.

4ch Limitation of 4ch MSO

The additional logic inputs of a four-channel MSO mixed-signal oscilloscope provides enough channels, but this method has a blind-spot. Digital waveform analysis using logic inputs alone cannot reveal anomalies such as voltage drift, noise, distortion or ringing, and measure rise-fall times. ECU testing requires stringent examination of all digital waveforms – and analog input channels are the best tool for the job.

Typical General Applications for the Eight-Channel DLM4000

8ch Power Supply & Power Converter Test



Example: Start-up sequence test of multi-output power supply or Converter
Primary /secondary voltage/current and power supply control signal

During the evaluation of a power supply design, it is necessary to measure noise, ripple, voltage margin and current, as well as timing margins and the jitter of the startup-shutdown sequences. As the number of waveforms in modern power supply designs is increasing, especially for intelligent digitally-controlled power supplies, battery management systems, and wireless power supply systems - a four-channel oscilloscope is not enough.

Recorder Limitation of Recorder

A modern multi-channel recorder provides enough channels and long record times; however, due to modest sample and update rates, the recorder is unlikely to be successful at measuring high-speed waveforms in the vicinity of CPUs & FPGA such as communication signals, high-frequency noise, and fast waveform anomalies.

8ch Troubleshooting, total system test



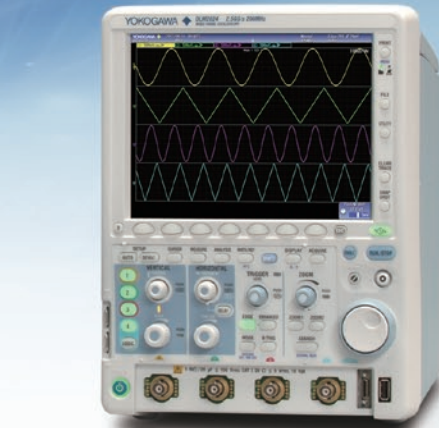
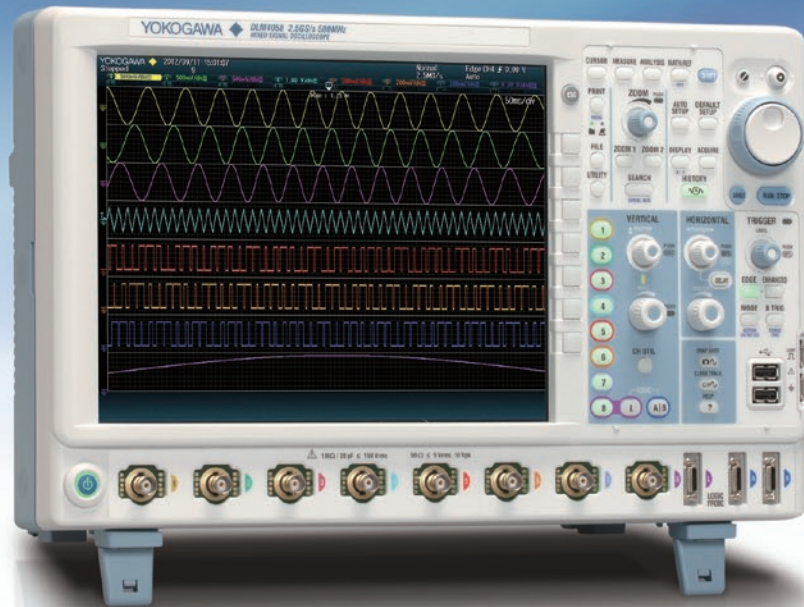
Example: Troubleshooting of infrequent problems
Comprehensive stability test of the whole system

For laboratory and field troubleshooting, the ability to measure as many suspicious signals as possible enables quick solutions to be found. The measurement time for system testing is often very limited. The 8 channels of the DLM4000 provide the capability to measure more signals at one time, both now and to meet future needs.

4ch Limitation of two 4 channel Scopes

When four channels are not enough, it is common to connect two separate four channel scopes. This approach is not only cumbersome but inter-waveform timing can lack credibility and post-processing of the waveform data files is twice as much work. The sensible approach is an eight-channel MSO.

Features, Functionality, and Operability – satisfying the needs of today's engineers.



Portrait, compact body
DLM2000 Mixed signal oscilloscope series

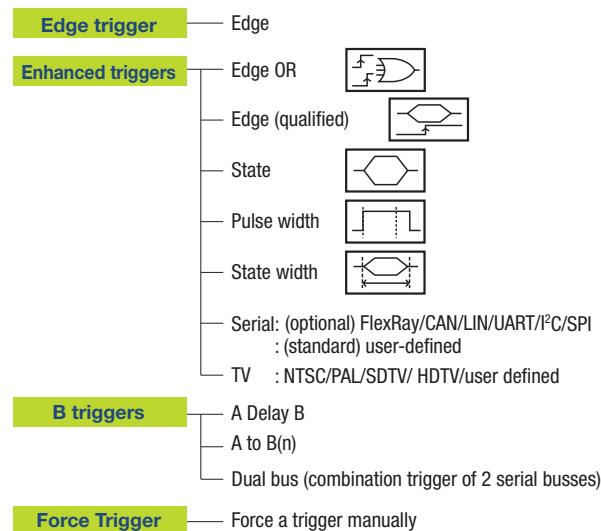
Reliable capture, from fast-short pulses to long recordings

Use the DLM4000 like an eight-channel memory recorder or select faster sampling rates up to 1.25 GS/s across all channels!

For fast-short waveforms the comprehensive trigger suite captures the waveforms you need!

In addition to basic trigger functions such as Edge, State, and Pulse Width – Advanced trigger types are provided, including Edge OR between multiple channels, Serial Bus trigger in which A combination of two bus signals is possible, or an A and B combination of different trigger types.

This comprehensive trigger suite means you capture the correct waveforms – even for fast and complicated sets of waveforms containing combinations of analog, digital, and serial bus signals.



For long term recording, 'roll mode' gives you both realtime measurements and the waveform detail!

Selecting a long Time/Div setting automatically sets the DLM4000 into 'Roll Mode', which performs just like a recorder. During roll mode, powerful real-time waveform processing such as filtering, pulse counting and rotary counting can be executed simultaneously. This means that the DLM4000 can observe a PWM and encoder waveform – analysis of these waveforms in realtime is normally challenging – but the DLM4000 does it. Furthermore, checking the waveform by using the powerful zoom feature and parametric measurements is also possible during roll mode acquisition. This enables ongoing realtime waveforms to be analysed without interrupting or pausing the acquisition. Many oscilloscopes simply cannot do this.

During Roll Mode, real-time waveform processing such as PWM-filtering or pulse-counting means un-interrupted recording



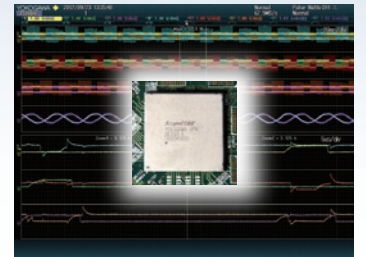
Best-in-class Deep Memory & Architecture

No-compromise ScopeCORE Architecture - the DLM4000 manages super-long record lengths with ease

Extra Deep Memory (125 Mega-Points) Enables Long-Duration Measurement

For-four channel measurements in Single shot mode, you can add the /M2 memory expansion option which provides a large memory of up to 125 Mpoints. Even at a fast sampling rate of 1.25 GS/s, records as long as 100 milli-seconds can be captured. Yokogawa's proprietary ScopeCORE IC assures responsiveness even for long record lengths. ScopeCORE maintains a responsive waveform display even when parametric measurements and waveform calculations are used and defines the architecture and power of the DLM4000

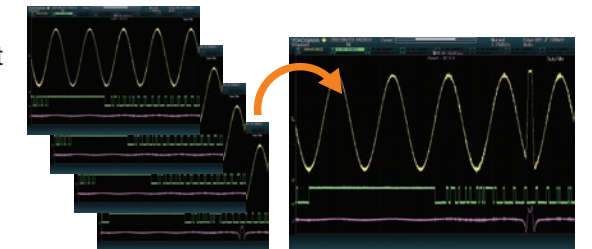
In order to find and display the desired parts of the signal within the long memory, powerful waveform search and a unique dual-window zoom function are provided.



Dual-window zooming enables two separate areas to be displayed.
(Center: ScopeCORE fast data processing IC)

You can replay waveforms later, so you'll never miss an abnormal waveform - History Function -

With the DLM4000 series, up to 20,000 previously captured waveforms can be saved in the automatically segmented acquisition memory without sacrificing acquisition rate. This History function, enables you to display just one or all of the previously captured waveforms (history waveforms) on screen. You can also perform cursor measurement, computation, and other operations on history waveforms. Using the History function, you can find and analyze rarely-occurring abnormal signals which may not cause a trigger to occur.



History search function

You can search the 20,000 previously captured waveforms for history waveforms that meet specified search criteria. You can also perform cursor measurement and other types of analysis on the search results.

Replay function

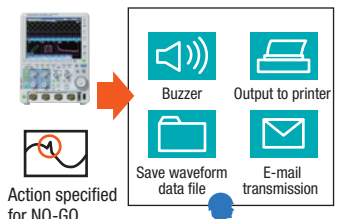
Waveforms can be displayed one at a time, using the rotary knob. With the Replay function, history waveforms can be automatically played back, paused, fast-forwarded, and rewind.

Save time using unattended supervisory data acquisition

With built-in GO/NO-GO testing, unattended data acquisition becomes a powerful tool.

A GO/NO-GO test result can be determined using customizable trigger conditions including waveform zoning, parameter measurement, and other criteria. For either a GO or a NO-GO test result, an action can be executed such as sounding a buzzer, saving the current waveform, or sending a notification to a designated e-mail address. Waveforms in which an abnormality occurred can be saved for confirmation and analysis at a later time. Let the DLM4000 save you time.

Abnormal waveform detected



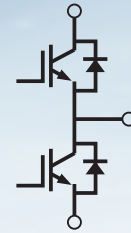
Action specified for NO-GO



Options and Accessories to Complete the Solution

For power device circuit voltage/current measurement

Eight analog input channels enables four pairs of voltage and current measurements, thereby supporting today's high-speed and sophisticated power electronics circuit development. Optional analysis functions and accessories support the comprehensive measurement of power electronic devices.



Power supply analysis function (/G4)

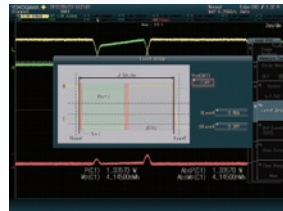
Power Analysis

- Switching Loss
- Safe Operating Area
- Harmonic Analysis
- Joule Integral

Power Measurement

Automated measurement of power parameters such as active power, apparent power, power factor etc. (Calculation of three-phase power is also possible)

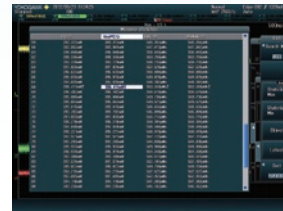
Example: Switching Loss Analysis



The built-in algorithm fine tunes Power Loss calculations. User-specified parameters include device such as IGBTs and MOSFETs.



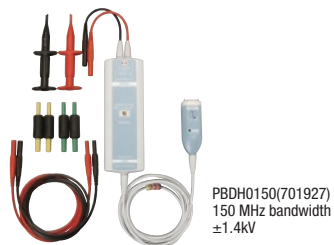
By dividing the long memory into segments, the SOA (safe operating area) can be analysed and, peak voltages between switching cycles can be compared by overlaying or one-by-one replay.



It is also possible to display a list of the switching loss of each cycle and save the results. By clicking a value in the list, the corresponding waveform will be directly displayed.

Easy Probing for Floating Signals –High-Voltage Differential Probe–

The High Voltage Differential Probe range includes models such as the compact PBDH0150 (1400Vpeak) as well as the 701926 (7kVpeak).



PBDH0150(701927)
150 MHz bandwidth
±1.4kV

Wide Range of Current Measurement –Current probe–

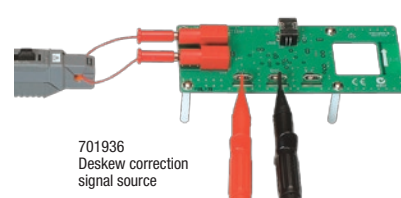
The PBC100 and PBC050 high-bandwidth current probes measure DC to 100MHz and 50MHz at up to 30Arms. The 701931 is available for higher currents up to 500Arms. The current probe range covers a wide range of applications.



PBC100(701928) / PBC050(701929)
DC to 100 MHz / DC to 50 MHz
30 Arms

Enables Precise Power Measurement –Deskew correction signal source–

When measuring very fast switching devices, probe delay time correction (de-skew) is crucial. The 701936 signal source and auto de-skew feature makes de-skewing quick and simple.

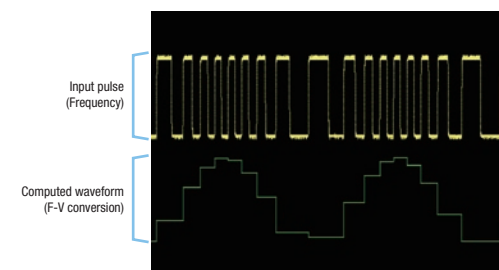


701936
Deskew correction
signal source

PWM, F-V, FFT, Diff/Integ ... For an Increasingly Mechatronic World

The DLM4000 features advanced, powerful, and flexible waveform computation abilities. An increasing number of mechatronics applications require measurements on the computational-result of a waveform, and not on the input waveform itself. Examples include PWM control signals, pulse-signals from rotating-shaft applications, vibration-sensor data, and accelerometer waveforms.

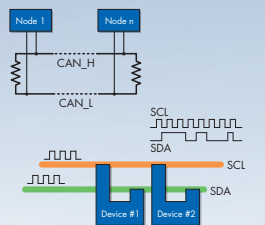
Examples of Standard Computations:
Real-time Low-Pass Filter, Add, Subtract, & Multiply Waveforms, Integral, Pulse Count, Rotary-Count of Encoder A/B Signal, XY Display, Power Spectrum



F-V conversion of frequency pulse (/G2 option)

CAN, LIN, I²C, SPI, & UART(RS232) ... Protocol Analysis

The DLM4000 offers advanced serial-bus analysis – saving precious development time of ECUs and Embedded Systems. Eight analog input channels means that multiple analog, serial-bus, and logic waveforms can be easily and simultaneously observed whilst preserving their relative timing. Up to four serial-buses can be analysed at the same time.



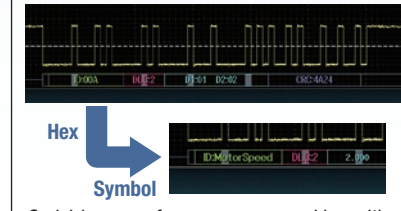
Serial bus analysis function (/F1, /F2, /F3, /F4, /F5, /F6) Triggering and real-time Decoding

Serial-Bus Auto-Setup Saves Time



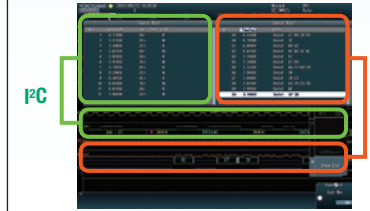
Intelligent serial-bus auto-setup feature enables quick and easy setup. The bit-rate and voltage thresholds are set automatically.

Hardware-based Decoding



Serial-bus waveforms are processed in realtime by a dedicated processor. Decoded serial-bus data is displayed alongside the bus waveform in a user-selected format (Binary, HEX, or ASCII). Symbol display based on a user-defined symbol library is also easily setup.

Dual Bus Analysis



Many systems contain multiple serial buses. The DLM4000 analyzes four different serial-bus types simultaneously. A combination trigger of two different serial buses is also possible.

Analyzing High-speed Differential Signals –PBDH1000 Differential Probe–

The PBDH1000 differential probe features high input-resistance, wide bandwidth, and a wide input-voltage range. The PBDH1000 is perfect for measuring the noise or surge voltage of in-vehicle high-speed serial bus waveforms, including CAN and FlexRay.

A generous assortment of probe tip accessories assures flexible probing options.

PBDH1000(701924)
1.0GHz bandwidth
1 MΩ, approx 1.1pF



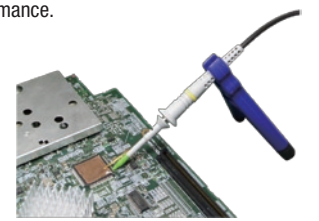
Probing Fast & Slow Logic Signals –PBL100 & PBL250 Logic Probe–

Logic signals are not always fast. In some cases, high input resistance is important. Yokogawa offers two types of logic probes, PBL100 (100 MHz, 1 MΩ), which has minimal loading, and the PBL250 (250 MHz, 100 kΩ), ideal for probing high-speed logic waveforms.



High-density IC and PCB Probing –701946 Miniature passive probe–

The 701946 is an ultra-compact passive probe for measuring high-speed waveforms on ICs and in high-density circuitry. Various accessories maximise safety and performance.

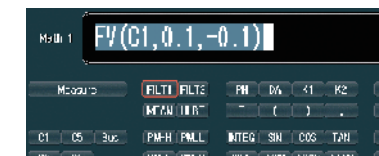


User-Defined Math (/G2) Customizable User-Defined Equations

Example of the functions in /G2 option, User Define Math:

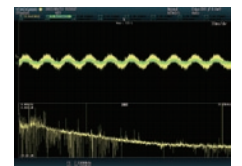
Duty cycle analysis for PWM waveform, F-V conversion, High-pass/Low-pass/Band-pass filtering, moving average, differential-integral, trigonometric, exponential-logarithm, arithmetic calculation of multiple channels, DA conversion of logic signals

User-defined math performs computation on input-waveforms and math-channel results; user-defined math can also use parametric measurement results within a computation expression.



Expansion of FFT Calculation

In addition to power spectrum, advanced FFT functions such as coherence and transfer function calculations are available for detailed frequency-domain analysis.



Advanced User-Interface

Comfortable Operation

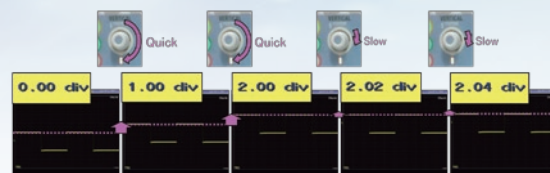
Dedicated knobs assure analog-like, intuitive operation

The push function for each knob enables fine adjustments to be made or puts the setting back to the default.



By pushing the knob, trigger level is set to the center of the waveform automatically.

Speed-sensitive knob behavior creates a natural response. The scope intelligently responds to the operator.



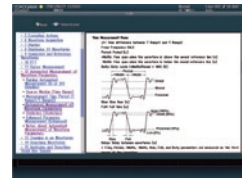
Multi-color LED for clarity



Built-in user guidance

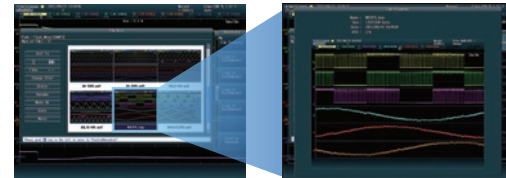
Graphical online help

The "?" button gets the operator fast and friendly online help. No more need to consult the user's manual.



Thumbnail can be viewed full-size

Thumbnails of waveform data, waveform image data, and Wave-Zone files can be displayed. The image and file names are shown so that you can view screen image contents while copying or deleting files.



Thumbnail can be viewed full-size

Multiple Languages

Select from 9 languages.



Flexible and Powerful Features

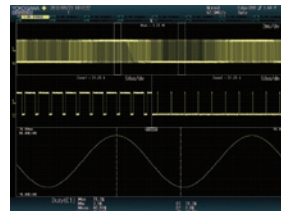
Advanced Waveform Parameter Measurement Functions

Statistical Analysis

Max/Mean/Freq/Rise/Fall/Delay....., 29 different parameters are available. Statistical processing of parameters, such as Min, Max, Mean and Standard deviation from multiple acquisitions, is also possible. The Yokogawa original "cycle statistic" and "history statistic" measurement functions in combination with its long memory and 8-channel inputs, helps the analysis of periodic mechatronics and power electronics signals.

Trend and Histogram of Waveform Parameters

Waveform parameters can be displayed in list, trend and histogram formats. It is possible to find a characteristic value in the list display and jump to the actual waveform by clicking it.



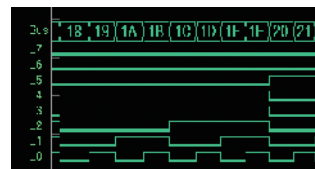
User-defined Waveform Parameters

Create customised waveform parameter measurements using the freeform equation editor. Calculation of three-phase power is also possible (/G4 option)



Logic Measurement

Parallel logic signals can be easily analysed using the Bus display and bit assignment functions. A State display is possible by using a clock edge to normalise the input bits. The optional DA calculation function is useful for evaluating AD/DA converters.



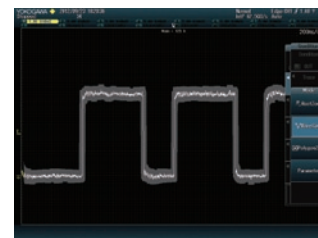
Variety of Display Formats

Many types of display format are supported such as XY, FFT, histogram.



Automated GO/NO-GO Judgment

GO/NO-GO judgment using polygon zoning or waveform parameters is possible without programming.



Broad Connectivity and Easier Control

GP-IB connection terminal (optional)

Control from a PC

Probe power terminal x8 (optional)

For current and differential probes that don't support the Yokogawa probe interface.

Ethernet (1000BASE-T)

Monitor & Control from a PC. Network Data Transfer & Email.

USB-PC Connection terminal

Control from a PC. Mount to PC as External storage.

GO/NO-GO Output terminal

Connection to an external monitor

RGB video signal output terminal

Connection to an external monitor

External trigger input

USB 2.0 peripheral connection terminal x2

Supports USB storage, USB mouse and keyboards.



Trigger output

PC efficiency improvement

DLM4000 is not Windows based, so it's safer when connecting to networks.

PC Connectivity Options

On PCs

- Display can be monitored on the browser.

On DLM4000

- A hard drive of the PC on the network can be selected as the save destination (FTP connection)
- Mail sending in automatic GO/NO-GO judgment.

Ethernet

Internal storage
Standard: 1.8 GB
Optional: 7.2 GB

USB

Password protection and selectable server function assures security.

On PCs

- DLM4000's internal storage can be recognized by a PC as an external USB storage device. Transferring files is easy even when a USB thumb drive can't be used.

Software Control

<http://tmi.yokogawa.com/ea/products/oscilloscopes/oscilloscopes-application-software/>

Free Software

Off-line waveform display and analysis

XviewerLITE –Basic check–
Zoom, V-cursor, conversion to CSV format

Waveform monitoring on a PC

XWirepuller
Remote monitor and operation
Transferring image files

Data transfer to a PC

Control library "TMCTL"
For Visual Studio

DL-Term
Interactive tool

Command control Custom software development

LabVIEW instrument driver

Optional Software

Trial version available

Xviewer –Advanced Analysis–
Advanced and useful functions are supported. Good for precise, off-line waveform analysis.

- Waveform observation and analysis
- Cursor, Parametric Measure
- Statistical Analysis
- Multiple file display
- Advanced waveform operations
- Comment, marking, printing and making report
- Optional Math computation feature
- Remote monitor
- Instruments communication function
- Transferring waveform & image files

MATLAB Tool Kit
Remote control from MATLAB and data file importing.

Models		
Model	Frequency bandwidth	Input channels
DLM4038	350 MHz	(standard) 8 analog channels or 7 analog channels + 8bit logic
DLM4058	500 MHz	8 analog channels + 16bit logic or (/L16 option) 7 analog channels + 24bit logic

Basic Specifications		
Analog Signal input	CH1 to CH8	
Input channels	(CH1 to CH7 when using logic input)	
Input coupling setting	AC, DC, DC50 Ω, GND	
Input impedance	1 MΩ ±1.0%, approximately 20 pF	
	50 Ω ±1.0% (VSWR 1.4 or less, DC to 500MHz)	
Voltage axis sensitivity	1 MΩ	2 mV/div to 10 V/div (steps of 1-2-5)
setting range	50 Ω	2 mV/div to 500 mV/div (steps of 1-2-5)
Max. input voltage	1 MΩ	150 Vrms
	50 Ω	Max not exceed 5 Vrms or 10 Vpeak
Max. DC offset	1 MΩ	±1V (2 mV/div to 50 mV/div)
setting range		±10V (100 mV/div to 500 mV/div)
		±100V (1 V/div to 10 V/div)
	50 Ω	±1V (2 mV/div to 50 mV/div)
		±5V (100 mV/div to 500 mV/div)
DC accuracy*1		±(1.5% of 8 div + offset voltage accuracy)
Offset voltage accuracy*1	2 mV to 50mV/div	±(1% of setting +0.2 mV)
	100 mV to 500 mV/div	±(1% of setting + 2 mV)
	1 V to 10 V/div	±(1% of setting + 20 mV)
Frequency characteristics	-3 dB attenuation when inputting a sinewave of amplitude ±3div)**2	
	DLM4038	DLM4058
1 MΩ(when using passive probe)		
	100 mV to 100 V/div	DC to 350 MHz DC to 500 MHz
	20 mV to 50 mV/div	DC to 300 MHz DC to 400 MHz
50 Ω		
	10 mV to 500 mV/div	DC to 350 MHz DC to 500 MHz
	2 mV to 5 mV/div	DC to 300 MHz DC to 400 MHz
Isolation between channels	-34 dB@ analog bandwidth (typical value)	
Residual noise level*3	The larger of 0.4 mV rms or 0.05 div rms (typical value)	
A/D resolution	8bit (25LSB/div)	
	Max. 12 bit (in High Resolution mode)	
Bandwidth limit	FULL, 200 MHz, 100MHz, 20 MHz, 10 MHz, 5 MHz, 2 MHz, 1 MHz, 500 kHz, 250 kHz, 125 kHz, 62.5 kHz, 32 kHz, 16 kHz, 8 kHz (can be set for each channel)	
Maximum sample rate		
Real time sampling mode	Interleave OFF	1.25 GS/s
	Interleave ON	2.5 GS/s
Repetitive sampling mode	125 GS/s	
Maximum record length	Repeat / Single / Single Interleave	
	Standard	1.25 M / 6.25 M / 12.5 MPoints
	/M1	6.25 M / 25 M / 62.5 MPoints
	/M2	12.5 M / 62.5 M / 125 MPoints
Ch-to-Ch deskew	±100 ns	
Time axis setting range	1 ns/div to 500 s/div (steps of 1-2-5)	
Time base accuracy*1	±0.002%	
Logic Signal Input		
Number of inputs	Standard	8 bit (excl. 8 ch input and logic input)
	/L16	24bit (16bit when 8 ch is used)
Maximum toggle frequency*1	Model 701988: 100 MHz	
	Model 701989: 250 MHz	
	701988, 701989 (8 bit input)	
	(701980, 701981 are available)	
Compatible probes	701988: 500 mVp-p	
	701989: 300 mVp-p	
Min. input voltage	Model 701988: ±40 V	
	Model 701989: threshold ±6V	
Input range	±40 V (DC + ACpeak) or 28 Vrms (when using 701989)	
Max. nondestructive input voltage		
Threshold level setting range	Model 701988: ±40 V (setting resolution of 0.05 V)	
	Model 701989: ±6 V (setting resolution of 0.05 V)	
Input impedance	701988: Approx. 1 MΩ/approx. 10 pF	
	701989: Approx. 100 kΩ/approx. 3 pF	
Maximum sampling rate	1.25 GS/s	
Maximum record length	Repeat / Single	
	Standard	1.25 M / 6.25 MPoints
	/M1	6.25 M / 25 MPoints
	/M2	12.5 M / 62.5 MPoints

Triggers		
Trigger modes	Auto, Auto Level, Normal, Single, N-Single	
Trigger type, trigger source	A triggers	CH1 to CH8, Logic, EXT, LINE
		Edge OR CH1 to CH8
		Edge Qualified CH1 to CH8, Logic, EXT
		State CH1 to CH8, Logic
		Pulse width CH1 to CH8, Logic, EXT
		State width CH1 to CH8, Logic
		TV CH1 to CH8
		Serial Bus
		I/C (optional) CH1 to CH8, Logic
		SPI (optional) CH1 to CH8, Logic
		UART (optional)CH1 to CH8, Logic
		FlexRay (optional)CH1 to CH8
		CAN (optional)CH1 to CH8
		LIN (optional)CH1 to CH8
		User defined CH1 to CH8

	AB triggers	A Delay B	10 ns to 10 s (Edge, Edge Qualified, State, Serial Bus)
		A to B(N)	1 to 10* (Edge, Edge Qualified, State, Serial Bus)
		Dual Bus	Serial bus only
	Force trigger	Force a trigger manually	
	CH1 to CH8	±4 div from center of screen	
Trigger level setting range	CH1 to CH8	0.01 div (TV trigger: 0.1 div)	
Trigger level setting resolution	CH1 to CH8	±(0.2 div + 10% of trigger level)	
Trigger level accuracy*1	CH1 to CH8	Center/Width can be set on individual Channels	
Window Comparator		from CH1 to CH8	
Display			
Display		12.1-inch TFT color liquid crystal display	1024 × 768 (XGA)
Functions			
Waveform acquisition modes		Normal, Envelope, Average	
High Resolution mode		Max. 12 bit (the resolution of the A/D converter can be improved equivalently by placing a bandwidth limit on the input signal.)	
		Real time, interpolation, repetitive sampling	
		Select OFF, Intensity (waveform frequency by brightness), or Color (waveform frequency by color)	
Sampling modes		100 ms to 100 s, Infinite	
Accumulation		Enabled at 100 ms/div to 500 s/div (depending on the record length setting)	
		Two zooming windows can be set independently (Zoom1, Zoom2)	
		×2 to 2.5 points/10div (in zoom area)	
		Auto Scroll	
		Edge, Edge Qualified, State, Pulse Width, State Width	
		I-C (option), SPI (option), UART (option), CAN (option), LIN (option), FlexRay (option)	
		2,500 (record length 1.25 kPoints, with standard)	
		10,000 (record length 1.25 kPoints, with /M1 option)	
		20,000 (record length 1.25 kPoints, with /M2 option)	
		Select Rect, WAVE, Polygon, or Parameter mode	
		Automatically displays the history waveforms sequentially	
		Specified or average waveforms	
		ΔT, ΔV, ΔT & ΔV, Marker, Degree	
		Currently displayed waveform can be retained on screen	
	Accumulation time		
	Zoom factor		
	Scroll		
	Search functions		
	History memory	Max. data	
	History search		
	Replay function		
	Display		
	Types		
	Cursor		
	Snapshot		

Computation & Analysis Functions			
Parameter measurement		Max, Min, P-P, High, Low, Amplitude, Rms, Mean, Sdev, IntegTY+, IntegTY, +Over, -Over, Pulse Count, Edge Count, V1, V2, ΔT, Freq, Period, Avg Freq, Avg Period, Burst, Rise, Fall, +Width, -Width, Duty, Delay	
		Min, Max, Ave, Cnt, Sdev	
		Continuous, Cycle, History	
		Up to 2 trend or histogram display of specied wave parameters	
Computations (MATH)		+, -, ×, /, Filter (Delay, Moving Avg, IIR Lowpass, IIR Highpass), Integ, Count / Rotary count, user defined math (optional)	
		4 (Math1, to Math4)	
Computable no. of traces		Standard model: 6.25 MPoints,	
Max. computable memory length		/M1 memory expansion option: 25 MPoints, /M2 memory expansion option: 62.5 MPoints	
		Up to 4 traces (REF1/to REF4) of saved waveform data can be displayed and analyzed	
		All Condition, Zone, Param, Rect, Polygon	
		Buzzer, Print, Save, Mail, Go/Nogo out	
		Displays XY1, to XY4 and T-Y simultaneously	
		Number of points: 1.25k, 12.5k, 125k, 250k	
		Window functions: Rectangular, Hanning, Flat-Top	
		FFT Types: PS (LS, RS, PSD, CS, TF, CH are available with /G2 or /G4 option)	
		Displays a histogram of acquired waveforms	
		The following operators can be arbitrarily combined in equations:	
		+, -, ×, /, SIN, COS, TAN, ASIN, ACOS, ATAN, INTEG, DIFF, ABS, SQRT, LOG, EXP, LN, BIN, DELAY, P2 (power of 2), PH, DA, MEAN, HLBT, PWHH, PWLL, PWWL, PWHL, PWXX, FV, DUTYH, DUTYL,	
		The maximum record length that can be computed is as well as standard math functions	
Power supply analysis (/G4 option)		For Pwr1 and Pwr2, selectable from 4 analysis types	
Power analysis		Deskweing between the voltage and current waveforms can be executed automatically.	
		Total loss / switching loss, power waveform display, Automatic measurement and statistical analysis of power analysis items (Wp, Wp+, Wp-, Abs.Wp, P, P+, P-, Abs.P, Z)	
	Switching loss		
	Safety operation area	SOA analysis by X-Y display, using voltage as X axis, and current as Y axis is possible	
	Harmonic analysis	Basic comparison is possible with following standard	
		Harmonic emission standard IEC61000-3-2 edition 2.2, EN61000-3-2(2000), IEC61000-4-7 edition 2	
	Joule integral	Joule integral (I2t) waveform display, automatic measurement and statistical analysis is possible	

Power Measurement		Automated measurement of power parameters for up to four pairs of voltage and current waveforms
		Values can be statistically processed and calculated
		Urms, Unm, Udc, Urmn, Uac, U+pk, U-pk, Up-p
		Irms, Imn, Idc, Irmn, Iac, I+pk, I-pk, Ip-p
		P, S, Q, Z, λ, Wp, Wp+, Wp-, Abs.Wp, q, q+, q-, Abs.q
Measurement parameters		

I ² C Bus Signal Analysis Functions (/F2 & /F3 Options)		
Applicable bus	I ² C bus	Bus transfer rate: 3.4 Mbit/s max.
		Address mode: 7 bit/10 bit
		Complies with System Management Bus
I ² C Trigger modes	SM bus	Every Start, Address & Data, Non-Ack, General Call, Start Byte, HS Mode
Analyzable signals		All analog, logic and Math channels
Analysis results displays		Analysis no., time from trigger position (Time (ms)), 1st byte address, 2nd byte address, R/W, Data, Presence/absence of ACK, information
		Auto setting of threshold value, time axis scale, voltage axis scale, and display of analysis results
Auto setup function		
Analyzable no. of data		300,000 bytes max.
Search function		Searches data that matches specified address pattern, data pattern, and acknowledge bit condition
		Analysis list data can be saved to CSV-format files

SPI Bus Signal Analysis Functions (/F2 & /F3 Options)		
Trigger types		3 wire/4 wire
		After assertion of CS, compares data after arbitrary byte count and triggers.
		All analog, logic and Math channels
Analyzable signals		Analysis no., time from trigger position (Time (ms)), 1st byte address, 2nd byte address, R/W, Data, Presence/absence of ACK, information
Analysis results displays		MSB/LSB
		Auto setting of threshold value, time axis scale, voltage axis scale, and display of analysis results
		300,000 bytes max.
		Specify data interval (1 to 32 bits), decode start point, and data length
		Analysis no., time from trigger position (Time (ms)), Data 1, Data 2
		Data search function
Auxiliary analysis functions		Analysis list data can be saved to CSV-format files
Analysis result save function		

UART Bus Signal Analysis Functions (/F1 & /F3 Options)		
Bit rate		1200 bps, 2400 bps, 4800 bps, 9600 bps,19200 bps, user defined (an arbitrary bit rate from 1 k to 10 Mbps with resolution of 100 bps)
		Select a data format from the following 8 bit (Non Parity) / 7 bit Data + Parity / 8 bit + Parity
UART Trigger modes		Every Data, Data, Error (Framing, Parity)
Analyzable signals		All analog, logic and Math channels
Auto setup function		Auto setting of bit rate, threshold value, time axis scale, voltage axis scale, and display of analysis results
		300,000 frames max.
		Analysis no., time from trigger position (Time(ms)), Data (Bin, Hex) display, ASCII display, and Information.
		Data search
		Analysis list data can be saved to CSV-format files

CAN Bus Signal Analysis Functions (/F4 & /F6 Options)		
Applicable bus		CAN version 2.0A/B, Hi-Speed CAN (ISO11898), Low-Speed CAN (ISO11519-2)
Analyzable signals		All analog and Math channels
Bit rate		1 Mbps/500 kbps/250 kbps/125 kbps/83.3 kbps/ 33.3 kbps
		User defined (an arbitrary bit rate from 10 kbps to 1 Mbps with resolution of 100 bps)
CAN bus Trigger modes		SOF, ID/DATA, ID OR, Error(enabled when loading physical values/symbol definitions)
Auto setup function		Auto setting of bit rate, threshold value, time axis scale, voltage axis scale, and display of analysis results
		100,000 frames max.
		Analysis no., time from trigger position (Time (ms)), Frame type, ID, DLC, Data, CRC, presence/absence of Ack, information
		Data search and field jump functions
		Analysis list data can be saved to CSV-format files

LIN Bus Signal Analysis Functions (/F4 & /F6 Options)		
Applicable bus		LIN Rev. 1.3, 2.0, 2.1
Analyzable signals		All analog and Math channels
Bit rate		19.2 kbps, 9.6 kbps, 4.8 kbps, 2.4 kbps, 1.2 kbps
		User defined (an arbitrary bit rate from 1 kbps to 20 kbps with resolution of 10 bps)
LIN bus Trigger modes		Break Synch, ID/DATA, ID OR, and ERROR trigger
Auto setup function		Auto setting of bit rate, threshold value, time axis scale, voltage axis scale, and display of analysis results
		100, 000 frames max.
Analyzable no. of frames		Analysis no., time from trigger position (Time (ms)), ID, ID-Field, Data, CheckSum, information
Analysis results displays		

Auxiliary analysis functions	Data search and field jump functions
Analysis result save function	Analysis list data can be saved to CSV-format files

FlexRay Bus Signal Analysis Functions (/F5 & /F6 Options)	
Applicable bus	FlexRay Protocol Version2.1
Analyzable signals	All analog and Math channels
Bit rate	10Mbps, 5Mbps, 2.5Mbps
FlexRay bus Trigger modes	Frame Start, Error, ID/Data, ID OR
Auto setup function	Auto setting of bit rate, threshold value, time axis scale,voltage axis scale, and display of analysis results
	5,000
Analyzable no. of frames	Analysis no., time from trigger position (Time(ms)), Segment (Static or Dynamic),Indicator, FrameID, Payload length, Cycle count, Data, Information
Analysis results displays	Data search
	Analysis list data can be saved to CSV-format files

GP-IB (/C1 Option)	
Electromechanical specifications	Conforms to IEEE std. 488-1978 (JIS C 1901-1987) Protocol
Conforms to IEEE std. 488.2-1992	
Auxiliary Input	
Rear panel I/O signal	External trigger input, external trigger output, GO-NGO output, video output
Probe interface terminal (front panel)	8 terminals
Probe power terminal (side panel)	8 terminals (/P8 option)

Internal Storage	
Capacity	Standard model: Approx. 1.8 GB
	/C8 option: Approx. 7.2 GB

Built-in Printer (/B5 Option)	
Built-in printer	112 mm wide, monochrome, thermal

USB Peripheral Connection Terminal	
Connector	USB type A connector × 2 (front panel)
Electromechanical specifications	USB 2.0 compliant
Supported transfer standards	Low Speed, Full Speed, High Speed
Supported devices	USB Mass Storage Class Ver. 1.1 compliant mass storage devices
	USB HID Class Ver.1.1 compliant mouse, keyboard

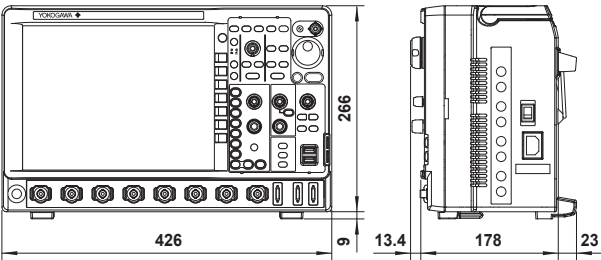
USB-PC Connection Terminal	
Connector	USB type B connector × 1
Electromechanical specifications	USB 2.0 compliant
Supported transfer standards	High Speed, Full Speed
Supported class	USBTMC-USB488 (USB Test and Measurement Class Ver. 1.0)

Ethernet	
Connector	RJ-45 connector × 1
Transmission methods	Ethernet (1000BASE-T/100BASE-TX/10BASE-T)
Supported services	Server: FTP, VXI-11, HTTP
	Client: FTP, SMTP, SNMP, LPR, DHCP, DNS

General Specifications	
Rated supply voltage	100 to 240 VAC
Rated supply frequency	50 Hz/60 Hz
Maximum power consumption	250 VA (when printer is used)
External dimensions	426 (W) × 266 (H) × 178 (D) mm (when printer cover is closed, excluding protrusions)
	Approx. 6.6kg With no options
Weight	
Operating temperature range	5 °C to 40 °C

*1 Measured under standard operating conditions after a 30-minute warm-up followed by calibration.
Standard operating conditions: Ambient temperature: 23°C ±5°C
Ambient humidity: 55 ±10% RH
Error in supply voltage and frequency: Within 1% of rating
*2 Value in the case of repetitive phenomenon. The frequency bandwidth of a single-shot phenomenon is the smaller of the two values. DC to sampling frequency/2.5 or the frequency bandwidth of the repetitive phenomenon.
*3. When the input section is shorted, the acquisition mode is set to Normal, accumulation is OFF, and the probe attenuation is set to 1:1.

External Dimensions	
---------------------	--



Unit: mm

Model and Suffix Codes

Model	Suffix code	Description
DLM4038**		Mixed Signal Oscilloscope: 8ch, 350 MHz
DLM4058**		Mixed Signal Oscilloscope: 8ch, 500 MHz
Power cord	-D	UL/CSA standard
	-F	VDE standard
	-Q	BS standard
	-R	AS standard
	-H	GB standard
	-N	NBR standard
Language	-HE	English Message and Panel
	-HC	Chinese Message and Panel
	-HK	Korean Message and Panel
	-HG	German Message and Panel
	-HF	French Message and Panel
	-HL	Italian Message and Panel
Option	-HS	Spanish Message and Panel
	/L16	Logic 16bit
	/B5	Built-in printer
	/M1**	Memory expansion During continuous measurement: 6.25Mpoints; Single mode: 25Mpoints (when interleave mode ON: 62.5Mpoints)
	/M2**	Memory expansion During continuous measurement: 12.5Mpoints; Single mode: 62.5Mpoints (when interleave mode ON: 125Mpoints)
	/P8**	Eight probe power connectors
	/C1	GP-IB interface
	/C8	Internal storage (7.2 GB)
	/G2**	User defined math
	/G4**	Power supply analysis function (includes /G2)
	/F1**	UART trigger and analysis
	/F2**	IC+SPI trigger and analysis
	/F3**	UART+IC+SPI trigger and analysis
	/F4**	CAN+LIN trigger and analysis
	/F5**	FlexRay trigger and analysis
	/F6**	FlexRay+CAN+LIN trigger and analysis
	/E1**	Four additional 701939 probes (8 in total)
	/E2**	Attach four 701946 probes**
	/E3**	Attach eight 701946 probes**

*1: Logic probes are not included. Please order the accessory logic probe 701988/701989 sold separately.

*2: Only one of these can be selected at a time.

*3: Specify this option when using current probes or differential probes that don't support probe interface.

*4: Only one of these can be selected at a time.

*5: Only one of these can be selected at a time.

*6: Only one of these can be selected at a time.

*7: Only one of these can be selected at a time.

*8: The 701939 probes are not included when this option is selected.

Logic probes

Name	Model	Description
Logic probe(PBL100)	701988	1MΩ input resistance, max. toggle frequency 100 MHz, 8 inputs
Logic probe(PBL250)	701989	100kΩ input resistance, max. toggle frequency 250 MHz, 8 inputs

This is a Class A instrument based on Emission standards EN61326-1 and EN55011, and is designed for an industrial environment.
Operation of this equipment in a residential area may cause radio interference, in which case users will be responsible for any interference which they cause.

Yokogawa's Approach to Preserving the Global Environment

- Yokogawa's electrical products are developed and produced in facilities that have received ISO14001 approval.
- In order to protect the global environment, Yokogawa's electrical products are designed in accordance with Yokogawa's Environmentally Friendly Product Design Guidelines and Product Design Assessment Criteria.

YOKOGAWA

Yokogawa Meters & Instruments Corporation

YOKOGAWA METERS & INSTRUMENTS CORPORATION

Global Sales Dept.

YOKOGAWA CORPORATION OF AMERICA
2 Dart Road, Newnan, GA. 30265-1094 U.S.A.
Phone: +1-770-253-7000 Facsimile: +1-770-254-0928

YOKOGAWA EUROPE B. V.
Euroweg 2 3825 HD Amersfoort, THE NETHERLANDS
Phone: +31-88-4641000 Facsimile: +31-88-4641111

YOKOGAWA ENGINEERING ASIA PTE. LTD.
5 Bedok South Road, Singapore 469270 SINGAPORE
Phone: +65-6241-9933 Facsimile: +65-6241-2606

YOKOGAWA AMERICA DO SUL LTDA.
Praca Acapulco, 31-Santo Amaro, Sao Paulo/SP, BRAZIL CEP-04675-190
Phone: +55-11-5681-2400
Facsimile: +55-11-5681-4434

YOKOGAWA ELECTRIC KOREA CO., LTD.
C&M Sales Seoul Office
1301-1305, 13rd floor, Kolon digital tower, 106-1,
Yangpyongdong-5Ga, Yeongdeungpo-Gu, Seoul, 150-105,
Korea
Phone: +82-2-2628-3810 Facsimile: +82-2-2628-3899

YOKOGAWA AUSTRALIA PTY. LTD.
Tower A/112-118 Talavera Road Macquarie Park, NSW 2113
Australia
Phone: +61-2-8870-1100 Facsimile: +61-2-8870-1111

YOKOGAWA INDIA LTD.
Plot No. 96, Electronic City Complex, Hosur Road, Bangalore 560100, INDIA
Phone: +91-80-4158-6000 Facsimile: +91-80-2852-1442

YOKOGAWA SHANGHAI TRADING CO., LTD.
4F Tower D, Cartelo Crocodile Building, No.568 West Tianshan
Road, Shanghai, CHINA
Phone: +86-21-6239-6363 Facsimile: +86-21-6880-4987

YOKOGAWA MIDDLE EAST B. S. C.(C)
P.O.BOX 10070, Manama, Building 577, Road 2516,
Busaiteen 225, Muharraq, BAHRAIN
Phone: +973-17-358100 Facsimile: +973-17-336100

YOKOGAWA ELECTRIC CIS LTD.
Grokhol'skiy per. 13, Build. 2, 4th Floor, 129090, Moscow
RUSSIAN FEDERATION
Phone: +7-495-737-7868 Facsimile: +7-495-737-7869

Standard Main Unit Accessories

Part Name	Quantity
Power cord	1
Passive probe 701939 (500MHz, 1.3m)**	4
Protective front cover	1
Soft carrying case for probes	1
Printer roll paper (for /B5 option)	1 roll
Rubber leg cap	1 set
User's manuals**	1 set

*1: When /E1 option is selected, eight 701939 probes are included. When either /E2 or /E3 option is selected, no 701939 probe is included.

*2: Start guide as the printed material, and User's manuals as CD-ROM are included.

Accessories (sold separately)

Name	Model	Description
Passive probe**	701939	10MΩ(10:1)/500MHz/1.3m
Miniature passive probe	701946	10MΩ(10:1)/500MHz/1.2m
Active probe(PBA1000)	701912	1 GHz bandwidth, 100 kΩ(10:1), 0.9 pF
FET probe	700939	900 MHz bandwidth, 2.5 MΩ(10:1), 1.8 pF
100:1 high voltage probe	701944	400 MHz bandwidth, 1.2 m, 1000 Vrms
100:1 high voltage probe	701945	250 MHz bandwidth, 3 m, 1000 Vrms
Differential probe(PBDH1000)	701924	1 GHz bandwidth, 1 MΩ(50:1), max. ±25V
Differential probe(PBDH0150)	701927	150 MHz bandwidth, max. ±1400 V, 1 m extension lead
500MHz differential probe	701920	500 MHz bandwidth, max. ±12 V
200MHz differential probe	701922	200 MHz bandwidth, max. ±20 V
100MHz differential probe	700924	100 MHz bandwidth, max. ±1400 V
100MHz differential probe	701921	100 MHz bandwidth, max. ±700 V
High voltage 50MHz differential probe	701926	50 MHz bandwidth, max. 5000 Vrms
15MHz differential probe	700925	15 MHz bandwidth, max. ±500 V
Current probe(PBC100)**	701928	100 MHz bandwidth, max. 30 Arms
Current probe(PBC050)**	701929	50 MHz bandwidth, max. 30 Arms
Current probe**	701930	10 MHz bandwidth, max. 150 Arms
Current probe**	701931	2 MHz bandwidth, max. 500 Arms
Deskew correction signal source	701936	For deskew between voltage and current
Probe stand	701919	Round base, 1 arm
Printer roll paper	B9988AE	One lot: 10 rolls, 10 m each
MATLAB tool kit	701991	MATLAB plug-in software
Xviewer	701992-SP01	Viewer software (standard edition)
	701992-GP01	Viewer software (MATH edition)
GO/NO-GO cable	366973	GO/NO-GO signal output
Soft carrying case	701968	For DLM4000
Rack mount kit for DLM4000	701969-E	EIA standard-compliant
	701969-J	JIS standard-compliant

*1: As the accessories for 701939 probe, various adapters are available. Please refer to DL Series Accessories brochure.

*2: Current probes' maximum input current may be limited by the number of the probes used at a time.

[DLM is a registered trademark of Yokogawa Electric Corporation.]

Any company's names and product names appearing in this document are the registered trademarks or trademarks of their respective companies.

NOTE



"Before operating the product, read the user's manual thoroughly for proper and safe operation."

Subject to change without notice.

All Rights Reserved, Copyright© 2012, Yokogawa Meters & Instruments Corporation.

[Ed : 03/b]

Printed in Japan, 404(KP)